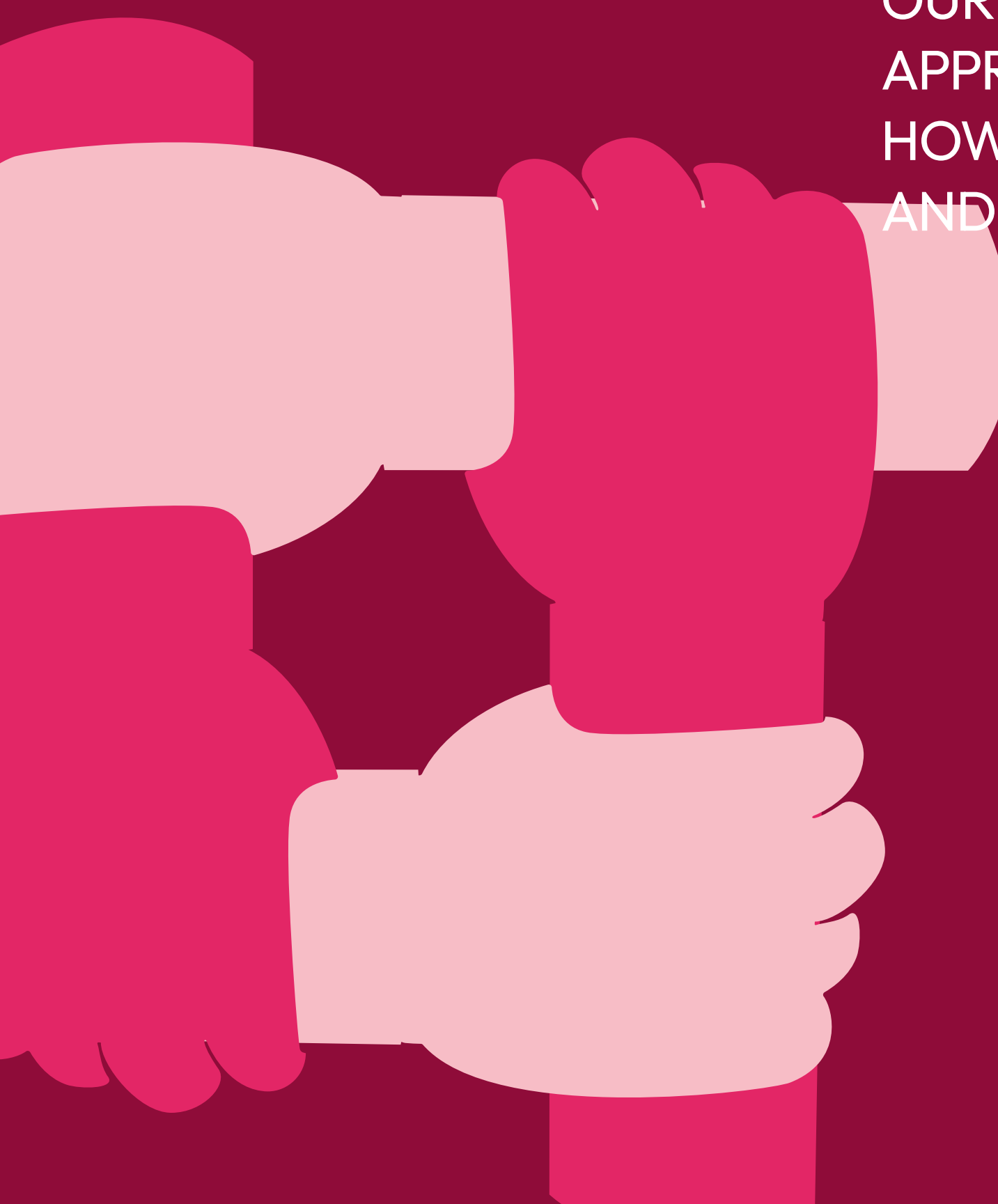


# STRENGTHENING OUR COMMUNITIES

FROM THE BEGINNING, SOCIAL AND ENVIRONMENTAL COMMITMENT HAS BEEN PART OF OUR IDENTITY, ESTABLISHING US AS A PEOPLE-CENTERED COMPANY THAT FOSTERS HOLISTIC DEVELOPMENT AND ENABLES US TO BE A FORCE FOR GOOD FOR OUR ASSOCIATES AND COMMUNITIES. THIS APPROACH DEFINES HOW WE OPERATE AND HOW WE CONTRIBUTE TO THE WELL-BEING AND GROWTH OF THOSE AROUND US.



# STRENGTHENING OUR COMMUNITIES

FOR  
LIFE



Through our social programs, we support initiatives aimed at building community capacity and promoting self-reliance. With this community-centered approach, we lay the groundwork for these initiatives to evolve, be replicated, and remain sustainable over time.

This is made possible through our 4 social investment programs:

01

Donations

02

Good Neighbor

03

Volunteering

04

Natural Disaster Relief



## DONATIONS

We collaborate with reputable organizations and ensure that every resource is used responsibly and reaches those who need it most. We also supplement these efforts with close monitoring to ensure that donations have the intended impact.

STRENGTHENING  
OUR  
COMMUNITIES

FOR  
LIFE



## GOOD NEIGHBOR

### CONSISTENT USE OF THE GOOD NEIGHBOR DIGITAL PLATFORM

We used our tracking platform, which allowed us to maintain greater control throughout all stages of the project, centralize documentation, integrate approval workflows, and classify projects by area of focus and impact category. It also made it easier to generate reports using dynamic dashboards.

### STRENGTHENING SOCIAL GOVERNANCE

We have strengthened our governance in our work with communities, adopting a more strategic approach to addressing their needs and generating tangible value for the company by strengthening ties with our value chain. Rather than expanding the number of initiatives, we prioritize programs with a deep and sustainable focus, aimed at driving solutions that promote more equitable social development. To this end, we have established mechanisms that enable us to propose and manage projects aligned with our objectives, fostering the participation of the various stakeholders in the value chain in building sustainable social impacts.



STRENGTHENING  
OUR  
COMMUNITIES

FOR  
LIFE



## GOOD NEIGHBOR

We build and strengthen ties with the communities near our workplaces. We focus primarily on the following areas:

### Education

We connect people in our communities with inclusive, equitable, and high-quality educational opportunities. We promote initiatives that integrate people at risk of exclusion. We improve facilities, provide materials, and encourage sustainability from an early age.

### Well-Being

We facilitate access to essential services and safeguard human rights, improving the living conditions of those who need it most. We create inclusive spaces, working together to build communities that are more just, compassionate, and humane.

### Environment

We encourage everyone to participate in the development of more sustainable communities and environments by supporting the maintenance of green spaces, initiatives to improve air quality, and the preservation of natural areas.

### Physical Activity

We help promote healthier lifestyles by improving facilities for physical and recreational activities.

### Safety

We renovate and improve public and community spaces to foster greater social cohesion. We promote the use of solutions that promote sustainability and encourage participation and integrity.



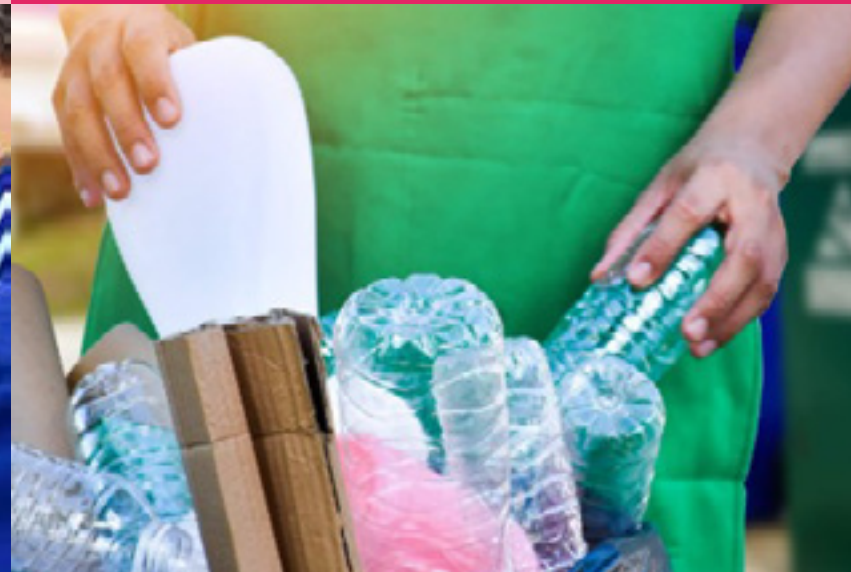
### Fortaleza Project

We promote the economic independence of women entrepreneurs in Latin America by supporting sustainable businesses that benefit their families and communities.



### Rain Schools

We treat water as a valuable resource, promoting a culture of mindful and responsible water use in schools and communities, which helps build water resilience for the future.



### Post-consumer collection and recycling

We collect post-consumer packaging to recycle it and turn it into items that enhance recreational and educational spaces in communities.



### Campeonas de Sueños

We foster confidence, leadership, and personal growth among vulnerable girls and young women, expanding their opportunities to overcome gender stereotypes from an early age.



### Rebanadas de Amor (Slices of Love)

We designed an inclusive sensory garden to support exploration and independence among people with Autism Spectrum Disorder (ASD), helping to reduce their sensory anxiety in urban settings.

## STRENGTHENING OUR COMMUNITIES

FOR  
LIFE



## VOLUNTEERING

We believe in the power of active participation to build a better world, which is why we encourage our people to get involved in projects that make a positive impact on communities.



### ENVIRONMENT

#### Improving air quality

Increasing greenery in cities helps improve air quality, reduces the impact of climate change, and allows for the natural replenishment of groundwater, which is why we organize reforestation events.



### WELL-BEING

#### Inclusive recipes

Eating can be a challenge for children with Autism Spectrum Disorder (ASD) and sensory difficulties. Our associates helped create an inclusive cookbook to promote safe options that build their independence and reduce food-related anxiety.



### NATURAL DISASTER RELIEF

We act decisively to provide immediate support to those who need it most in times of emergency.

STRENGTHENING  
OUR  
COMMUNITIES

FOR  
LIFE

